



HUSH LIGHT ACOUSTIC PANEL

NEW! Light as a feather acoustic panel

The Hush Light Acoustic Panel is a sound-absorbing panel that can also be used as a notice board. The panel can be mounted on the wall or on the ceiling.

The panel is made of 55 mm Basotect[®] melamine resin foam which is used in the aerospace and automotive industries for its lightweight, fire safety and A class a sound insulation properties. The substrate is 6 mm MDF board. The panel is fixed to the wall or ceiling with concealed brackets.

Hush Light Acoustic panel is upholstered with Camira Cara fabric with different color options.

The panel's appearance is finished with machine sewn corners. Other fabrics are also available at the customer's choice. The Hush Light Acoustic Panel is also available with Photo Print fabric.

The Hush Light Acoustic Panel is available in standard and custom sizes.



You design -we make it happen



TK-Team Group
www.tk-team.com
sales@tk-team.com



Cara



Lomond EJ192



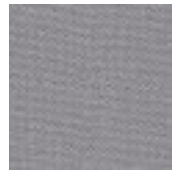
Beltane EJ193



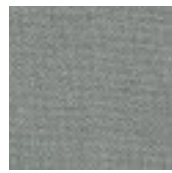
Austen EJ173



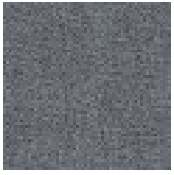
Lerwick EJ194



Shetland EJ191



Spray EJ033



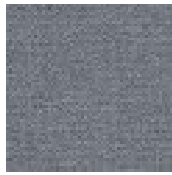
Portland EJ016



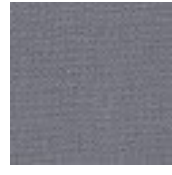
Merrick EJ048



Lead EJ104



Hillswick EJ190



Chaucer EJ172



Glass EJ004



Vit EJ184



Clan EJ169



Denny EJ196



Easdale EJ188



Adriatic EJ154



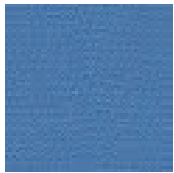
Walten EJ011



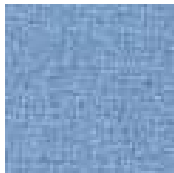
Cluanie EJ180



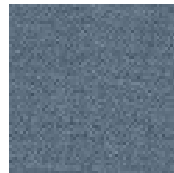
Galilee EJ125



Inverness EJ175



Dolphin EJ105



Ronay EJ189



Lora EJ187



Carron EJ015



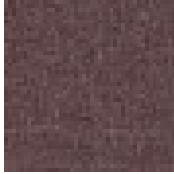
Staffa EJ185



Fair Isle EJ186



Maree EJ195



Lossie EJ197



Tummel EJ038



Pitlochry EJ076



Black EJ138

You design - we make it happen



TK-Team Group
www.tk-team.com
sales@tk-team.com